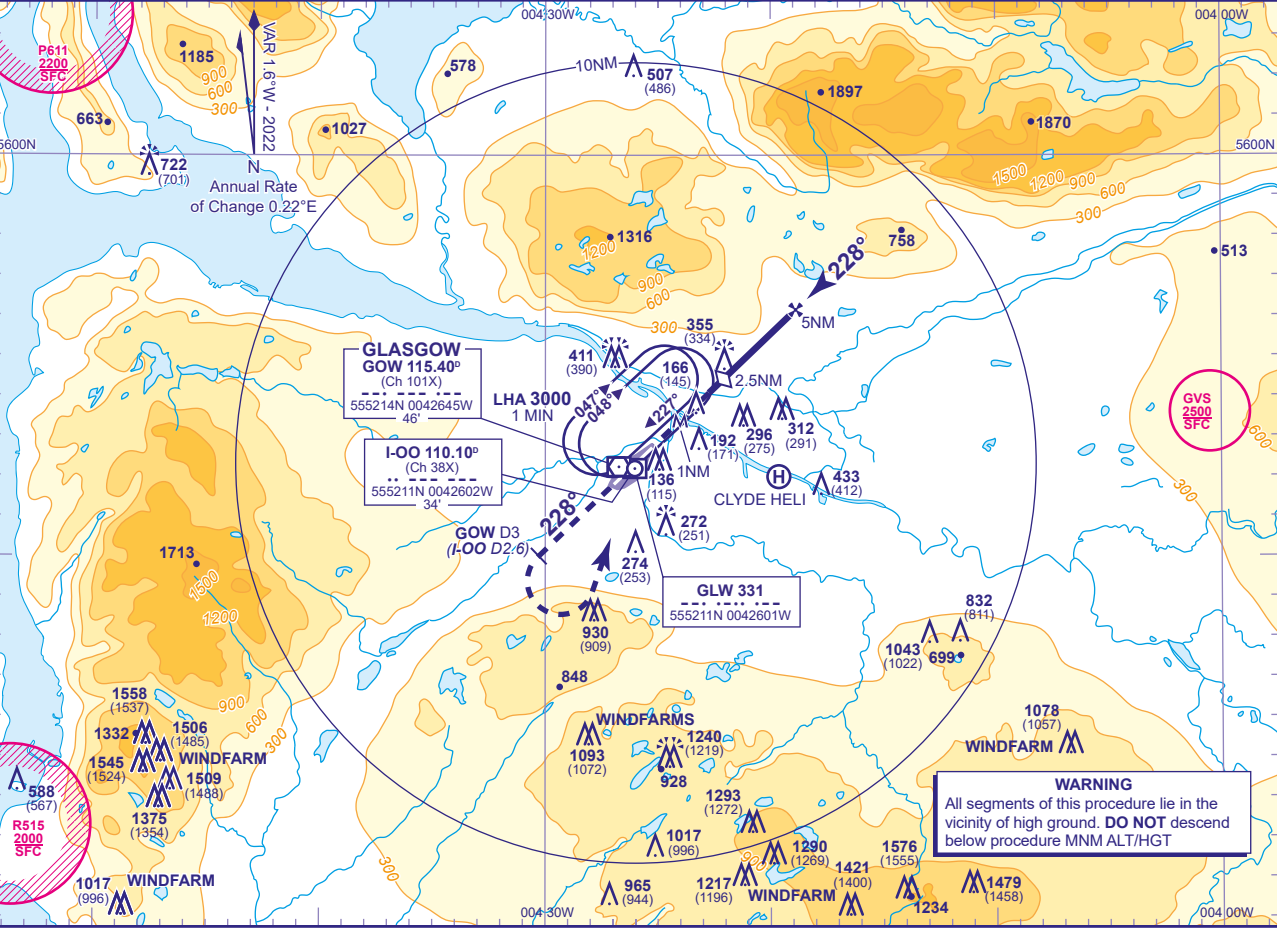


INSTRUMENT APPROACH CHART - ICAO

GLASGOW SRA RTR 2NM RWY 23 (ACFT CAT A,B,C,D)

|   |      |                           |                     |                       |                              |
|---|------|---------------------------|---------------------|-----------------------|------------------------------|
| <div>MSA</div> <div></div> <div>NDB(L) GLW or VOR GOW</div> | APP  | 119.100                   | GLASGOW APPROACH    | AD ELEVATION          | 26                           |
|   | TWR  | 118.805                   | GLASGOW TOWER       | THR ELEVATION         | 21                           |
|   |      | 121.705                   | GLASGOW GROUND      | OBSTACLE ELEVATIONS   | 1576 AMSL (1555) (ABOVE THR) |
|   | RAD  | 119.100, 125.250, 128.755 | GLASGOW RADAR       | BEARINGS ARE MAGNETIC |                              |
|   | ATIS | 129.575                   | GLASGOW INFORMATION |                       |                              |

|                     |      |
|---------------------|------|
| TRANSITION ALTITUDE | 6000 |
|---------------------|------|

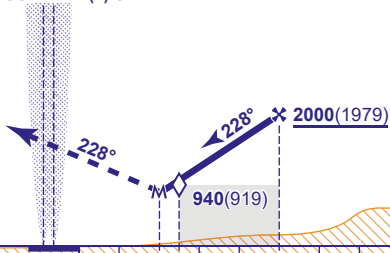


| RADAR ADVISORY HEIGHTS Gradient 6.5%, 395FT/NM |            |            |            |          |
|--|------------|------------|------------|----------|
| NM   | 5.0        | 4.0        | 3.0        | 2.0      |
| ALT(HGT)                                       | 2000(1979) | 1600(1579) | 1210(1189) | 810(789) |

Initial and intermediate approach as directed by radar (see note 1).

VOR DME GOW NDB(L) GLW

**MAPt RTR 2NM**  
Continuous climb to 3000. Initially, straight ahead to 2500 or GOW DME 3 (I-00 DME 2.6) whichever is later, then climbing left turn to hold at VOR GOW or NDB(L) GLW at 3000 or as directed.



| I-00 DME zero ranged to THR RWY 23 (DME GOW reads 0.9NM at THR RWY 23) |  |            |          |          |            |                 |        |      |     |     |
|--|--|------------|----------|----------|------------|-----------------|--------|------|-----|-----|
| Aircraft Category  |  | A          | B        | C        | D          | Rate of descent | G/S KT | 160  | 140 | 120 |
| OCA (OCH)  |  | Procedure  | 810(789) | 810(789) | 810(789)   |                 | FT/MIN | 1060 | 930 | 790 |
| VM(C)OCA (OCH AAL)   |  | Total Area | 810(784) | 810(784) | 1400(1374) | 1700(1674)      |        | 660  | 600 | 530 |

**NOTE 1** Minimum descent in the intermediate approach area until within 7NM radar range to touchdown is 2000.  
**2** Position overhead holding fixes according to inbound routing as cleared by ATC. The normal cleared altitude at the respective terminal fix is 7000. As this altitude is above the Transition Level, aircraft will be instructed to fly the appropriate flight level.  
**3** Aircraft unable to receive DME advise ATC. Radar ranges will be provided (if required) at 3NM in the missed approach